



PHOENIX
PROJECT MANAGEMENT

Newsletter

Autumn Edition 2014

A year in review, and a look ahead to the future

It has been an exciting year for PhoenixPM, during which we have continued the development of our interstate operations as well as our support of local Clients. We were pleased to be able to provide services to a range of existing and new Clients, and this newsletter provides a brief snapshot of a number of these projects.

Flinders Ports, South Australia Berth 4 Fuel Terminal

Following on from the Flinders Ports / PhoenixPM project team's successful on time and on budget delivery of the Pt Adelaide Berth 29 rail siding, in late 2012 Flinders Ports engaged PhoenixPM to manage the design, construction and commissioning phases of the Berth 4 Fuel Facility Upgrade Project. Part of a larger package of works including a tank farm and fuel pipeline, this strategically important project comprises three major work packages, including

dredging a deeper and larger berth pocket, construction of a 300m underwater combi-pile wall retaining the berth revetment, and the upgrade of the maritime and land-based aspects of the Berth to accommodate 80,000 DWT fuel vessels. The upgrade has involved significant challenges, including a constrained program and coordination of up to three main contractors and five work fronts on a site 300m x 20m. The project is due for completion in mid 2014.



Goulburn Murray Water, Victoria GM Water Connections Project

In mid 2013 PhoenixPM was appointed to GM Water's project management panel for delivery of the GMW Connections Project. Based in regional Victoria, this \$2b project will bring water efficient irrigation solutions

to landowners through the delivery of strategic connections projects over the next four year. Services on a number of work packages through the panel commenced in late 2013, and are due for completion in mid 2015.



Discovery Holiday Parks, South Australia Onslow Park

In mid 2013 Discovery Holiday Parks engaged PhoenixPM to provide contract development and project management support services to the Onslow project team. PhoenixPM developed contract scope of work documentation for

two works contracts and five consultancy contracts, and provided program and cost control, along with supporting project management services through until practical completion of the project in early 2014.

PHOENIX
PROJECT MANAGEMENT

Personal commitment. Professional delivery.

SA Water

Mt Gambier Modifications for Water Quality

We continued our long term project delivery partnership with SA Water throughout 2013, delivering projects for the Regional and Strategic project delivery teams, and providing project support to the Metro PMP team. This partnership was recently extended through until mid 2015.

One of our current projects undertaken as part of this partnership is the Mt Gambier Network Modifications for Water Quality.

The water supply for Mt Gambier is sourced from a series of natural

underground aquifer systems which accumulate in the famous Blue Lake and are pumped to customers via a network of pipes and tanks first constructed in the late 1800's, with some original infrastructure still in service. SA Water is undertaking water security upgrades to ensure water quality for the future safe drinking water supply for the community of Mt Gambier.

Included in the works for this \$2.5m project is a series of additional interconnecting pipelines ranging from DN150 to DN600 along with associated automated valves and controls



to ensure any out of specification water is diverted away from customers for pre-treatment.

An upgrade to the old telemetry system throughout the

adjacent network and tank infrastructure will also be delivered and work is expected to be completed late 2014.

Public Transport Services Division Department for Transport, Planning and Infrastructure

In our eighth continuous year of project delivery for the State Government's railway agency (in various guises), we delivered a number of high profile projects, including the tramline duplication on North Terrace. The project involved the replacement of the single track section of the tramline in North Terrace, Adelaide with a dual track section, the construction of a crossover to increase operational flexibility and overhead wiring, tram and road traffic

signal modifications. The role involved the management of the planning and delivery of the project from conception to completion.

The works on North Terrace were undertaken to reduce a bottle neck and improve tram operational efficiency as well as providing the infrastructure to allow a tram shuttle to run between Adelaide Entertainment Centre and Adelaide Railway Station to service special events.



Hindmarsh Shire Council, Victoria Wimmera Street Bridge Replacement

PhoenixPM was selected by the Hindmarsh Shire Council to provide project and contract management services for the design and construction of a replacement bridge over the Wimmera River in Dimboola.

The bridge, damaged during the 2011 floods, is being replaced in a number of stages. The first stage of the bridge was opened in late 2013, and the final stage will be opened in late April 2014.



AWMA Water Control Solutions

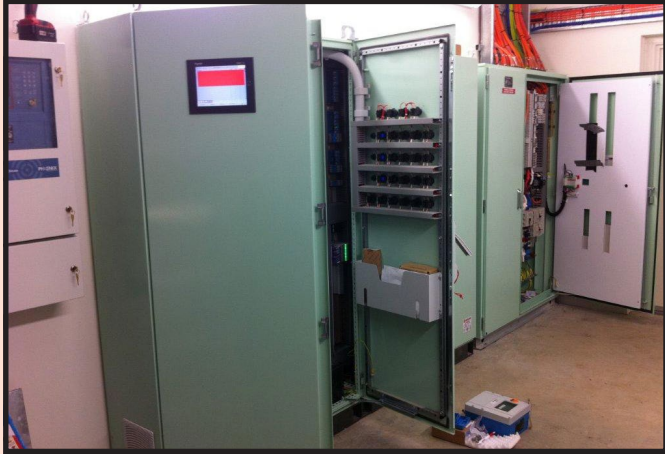
In late 2013 PhoenixPM was engaged by AWMA Water Control Solutions to provide project planning and construction management services for automated irrigation gate system projects involving overshoot gates, PLC

control and SCADA monitoring. Projects have included the refurbishment of gates at Lake Victoria for SA Water, and the automated control gates at the Barangaroo project on Sydney Harbor.

SAGE Automation, South Australia SA Water Instrumentation and Control Projects

Following on from over a year working together successfully on the SA Water NSISP Project, SAGE Automation asked PhoenixPM to provide project management support for a number of projects delivered in 2013. These projects

included major control system upgrades at Millbrook Pump Station, Anstey Hill Water Treatment Plant as well as instrumentation and control upgrades at Happy Valley and Hope Valley Water Treatment Plant.



Queensland Rail

In mid 2012, following a public call for applicants PhoenixPM was selected to provide project management services to the Queensland Rail, Rollingstock Engineering team, managing a range of projects within the team's portfolio through until contract completion in mid 2013.



Public Transport Authority of Western Australia Perth Metropolitan Passenger Rail Network

PhoenixPM was appointed to a project management panel to provide services to the Public Transport Authority in Perth. Commencing in March 2013, the Panel is used to provide project management across all rail infrastructure

disciplines including traction, signalling, communications, track, civil and stations, on the Perth metropolitan passenger rail network for a period of five years. PhoenixPM commenced service delivery on the Panel in 2013.



Tassie Challenge

For the third year in a row, PhoenixPM entered a team in the Swisse Mark Webber Tasmania Challenge as part of our community program. The team of Matt Robinson, James Irving and Charles Irving ran, rode and kayaked over 300km of rugged bush terrain. At the completion of five days competing the team achieved their goal of a podium place, coming in third in the 'Teams' category.



Company & Contact Details

PO Box 161, Goodwood SA 5034

P 08 8120 6002

E admin@phoenixpm.com.au

W www.phoenixpm.com.au



Phoenix Project Management
proudly supports



PHOENIX
PROJECT MANAGEMENT

Personal commitment. Professional delivery.